

**12-J1** Axis Snaplock Set  
(= Snaplock +  
Pin w/ clips 48-A2)

**14-P1** Axis-series Cable Set  
(= Cable + U-mount 27-B1  
+ Pin-Mount 27-K1)

**02-H1** Axis-FNX UniBack hiback Set  
(= Hiback + Eva + Snaplock-Set 12-J1  
+ C-bolt-Set 28-U2)

**28-U2** Axis-FNX C-bolt Set (= T-Nut + Screw  
30-E1 (M5\*12) + Pivotwasher 19-C1)

**18-G1** Axis LSR Ankle-Pivot-ladder

**01-N1** Axis-Series FNX Baseplate

**18-A1** LSR Toe-ladder w/ plug

**21-H2** Multi-Disk Mounting Set (= Disk  
+ Mount-Screws 42-G1 (M6\*14.5))

LSR Ankle-buckle w/ screw **41-D2**

Fusion ExoFrame Set  
(= ExoFrame + AnkleSpine  
+ ToeSpine + QS-latches) **11-F1**

LSR Toe-buckle w/ screw **41-E2**

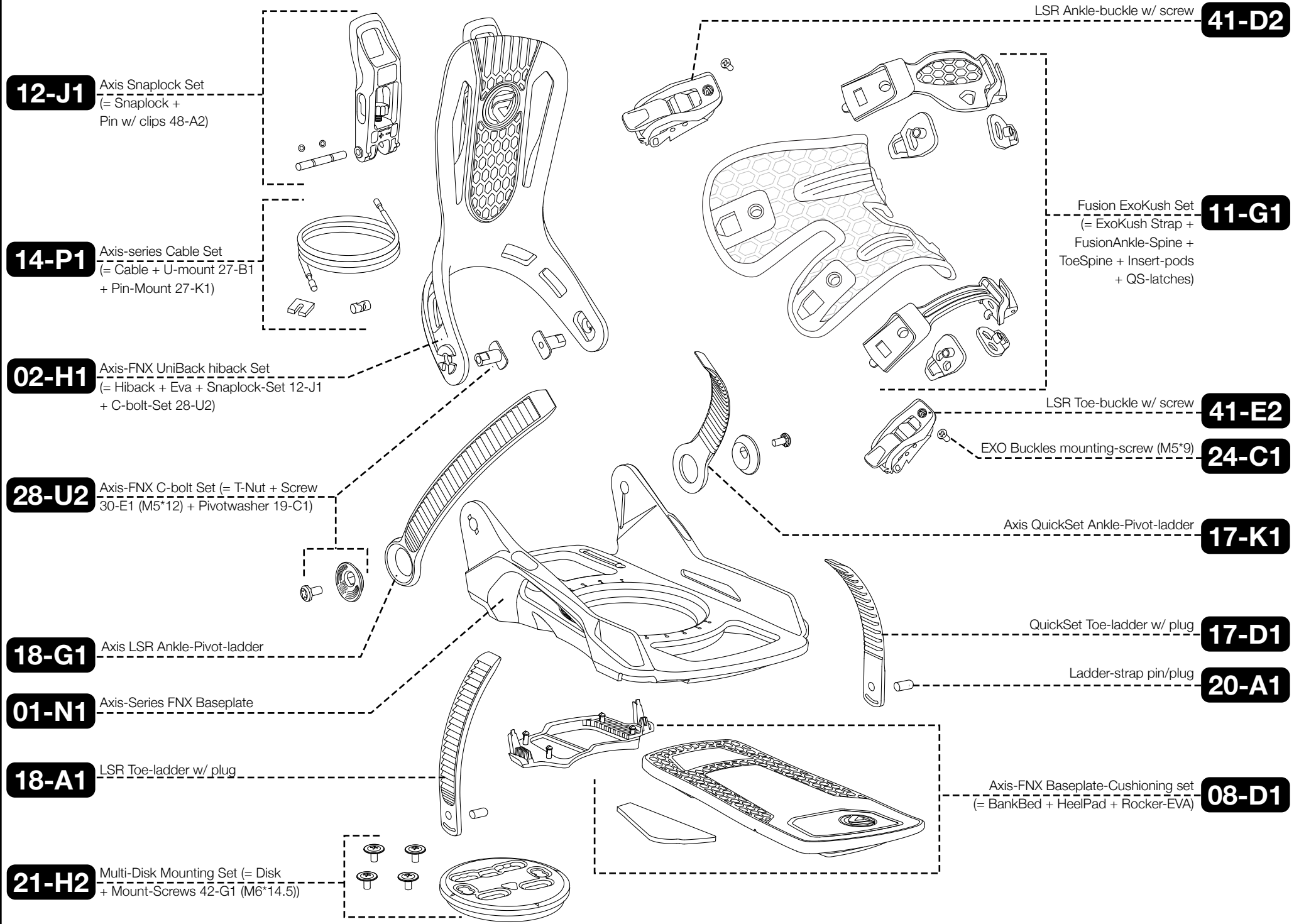
EXO Buckles mounting-screw (M5\*9) **24-C1**

Axis QuickSet Ankle-Pivot-ladder **17-K1**

QuickSet Toe-ladder w/ plug **17-D1**

Ladder-strap pin/plug **20-A1**

Axis-FNX Baseplate-Cushioning set  
(= BankBed + HeelPad + Rocker-EVA) **08-D1**



**12-J1** Axis Snaplock Set  
(= Snaplock +  
Pin w/ clips 48-A2)

**14-P1** Axis-series Cable Set  
(= Cable + U-mount 27-B1  
+ Pin-Mount 27-K1)

**02-H1** Axis-FNX UniBack hiback Set  
(= Hiback + Eva + Snaplock-Set 12-J1  
+ C-bolt-Set 28-U2)

**28-U2** Axis-FNX C-bolt Set (= T-Nut + Screw  
30-E1 (M5\*12) + Pivotwasher 19-C1)

**18-G1** Axis LSR Ankle-Pivot-ladder

**01-N1** Axis-Series FNX Baseplate

**18-A1** LSR Toe-ladder w/ plug

**21-H2** Multi-Disk Mounting Set (= Disk  
+ Mount-Screws 42-G1 (M6\*14.5))

LSR Ankle-buckle w/ screw **41-D2**

Fusion ExoKush Set **11-G1**  
(= ExoKush Strap +  
FusionAnkle-Spine +  
ToeSpine + Insert-pods  
+ QS-latches)

LSR Toe-buckle w/ screw **41-E2**

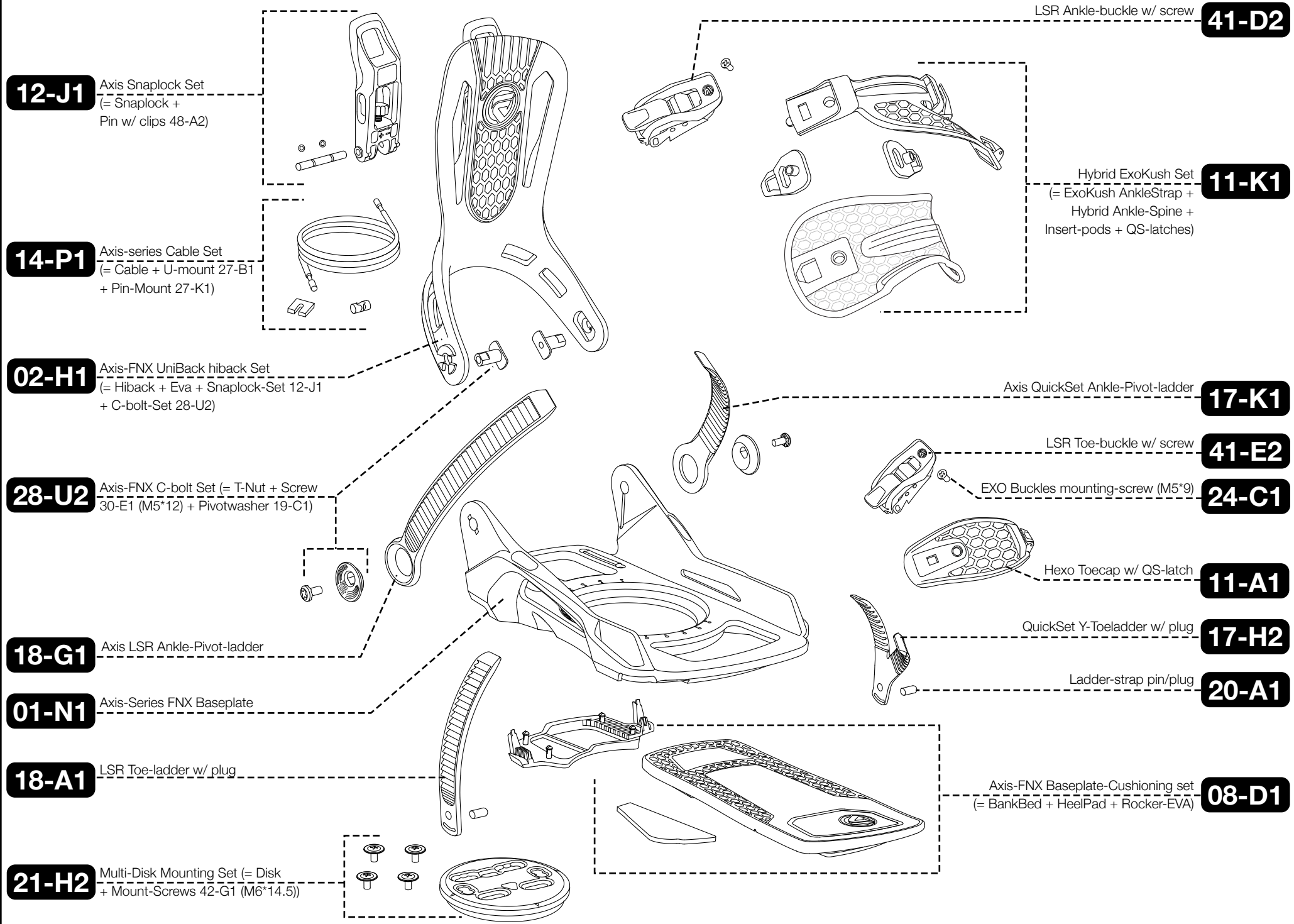
EXO Buckles mounting-screw (M5\*9) **24-C1**

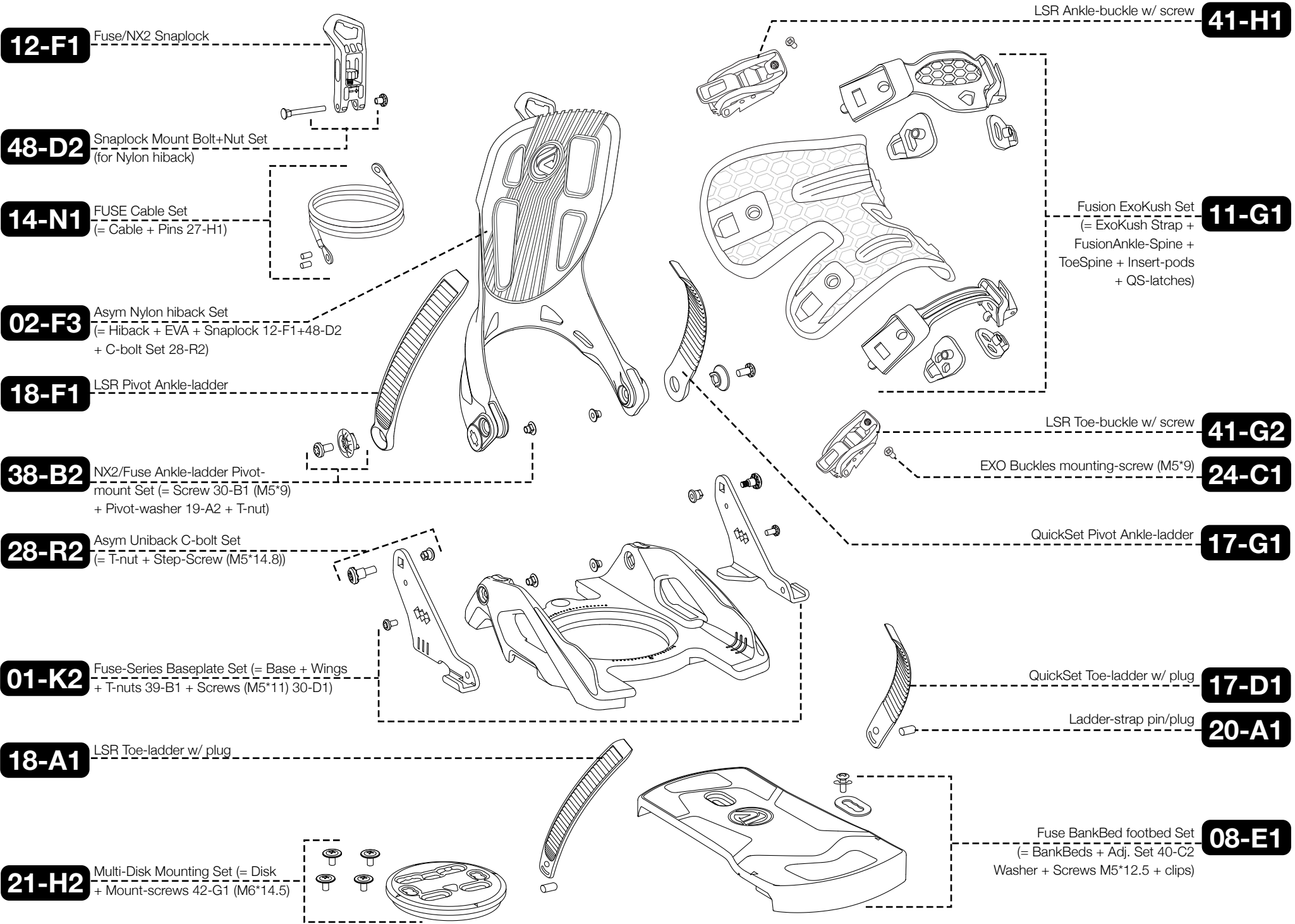
Axis QuickSet Ankle-Pivot-ladder **17-K1**

QuickSet Toe-ladder w/ plug **17-D1**

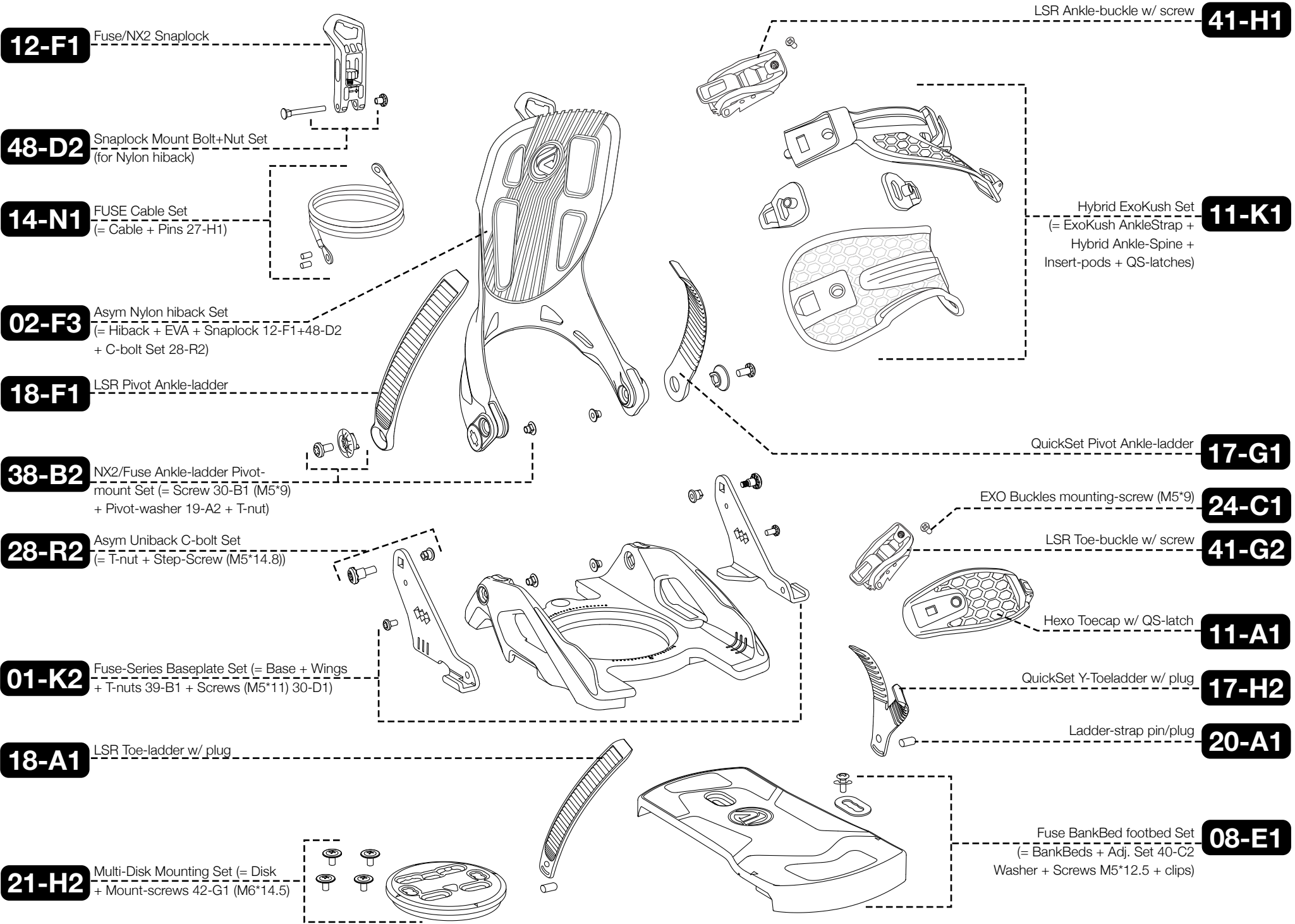
Ladder-strap pin/plug **20-A1**

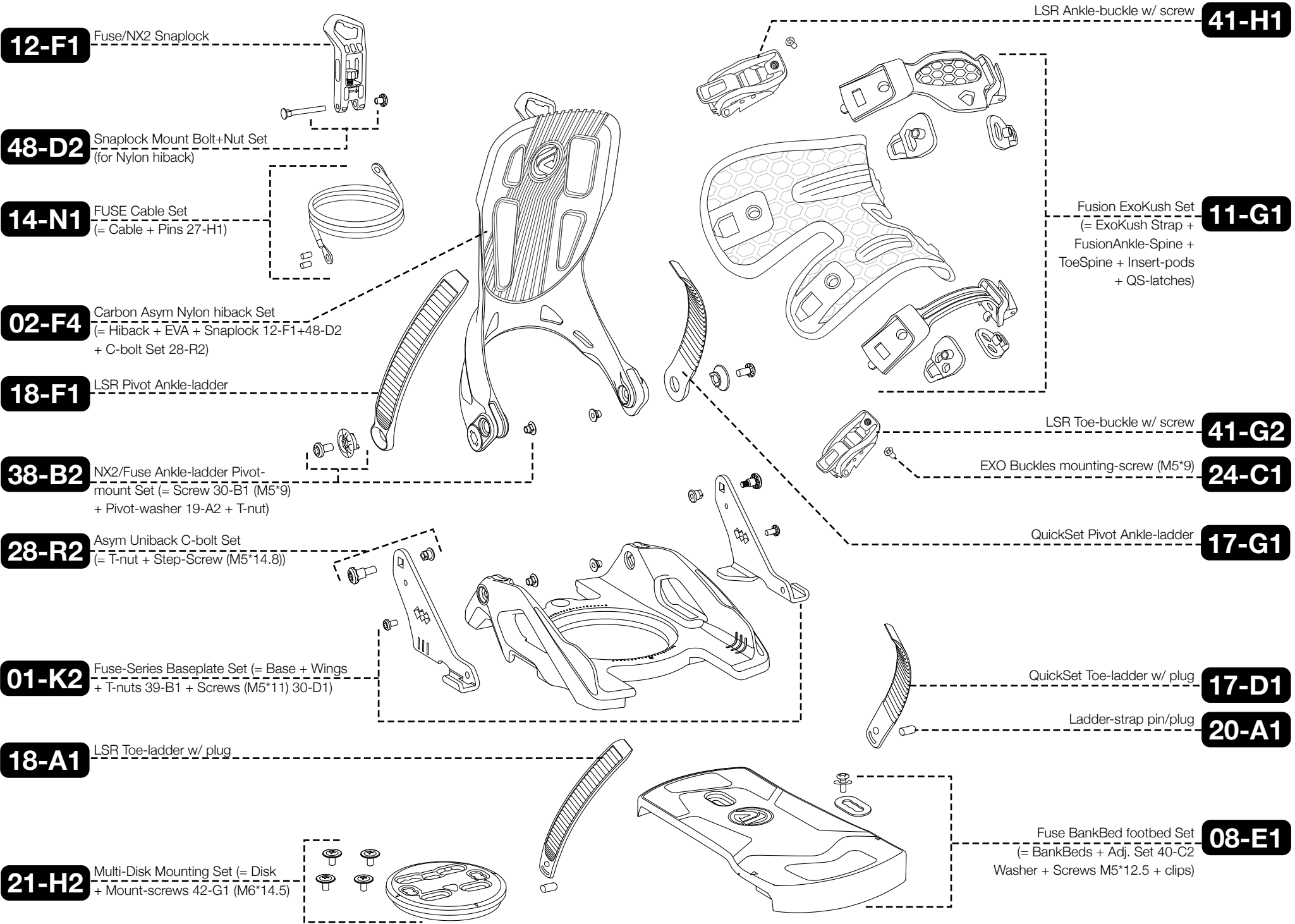
Axis-FNX Baseplate-Cushioning set  
(= BankBed + HeelPad + Rocker-EVA) **08-D1**











**12-F1** Fuse/NX2 Snaplock

**48-D2** Snaplock Mount Bolt+Nut Set  
(for Nylon hiback)

**14-N1** FUSE Cable Set  
(= Cable + Pins 27-H1)

**02-F4** Carbon Asym Nylon hiback Set  
(= Hiback + EVA + Snaplock 12-F1+48-D2  
+ C-bolt Set 28-R2)

**18-F1** LSR Pivot Ankle-ladder

**38-B2** NX2/Fuse Ankle-ladder Pivot-mount Set  
(= Screw 30-B1 (M5\*9)  
+ Pivot-washer 19-A2 + T-nut)

**28-R2** Asym Uniback C-bolt Set  
(= T-nut + Step-Screw (M5\*14.8))

**01-K2** Fuse-Series Baseplate Set (= Base + Wings  
+ T-nuts 39-B1 + Screws (M5\*11) 30-D1)

**18-A1** LSR Toe-ladder w/ plug

**21-H2** Multi-Disk Mounting Set (= Disk  
+ Mount-screws 42-G1 (M6\*14.5))

LSR Ankle-buckle w/ screw **41-H1**

Fusion ExoKush Set **11-G1**  
(= ExoKush Strap + FusionAnkle-Spine + ToeSpine + Insert-pods + QS-latches)

LSR Toe-buckle w/ screw **41-G2**

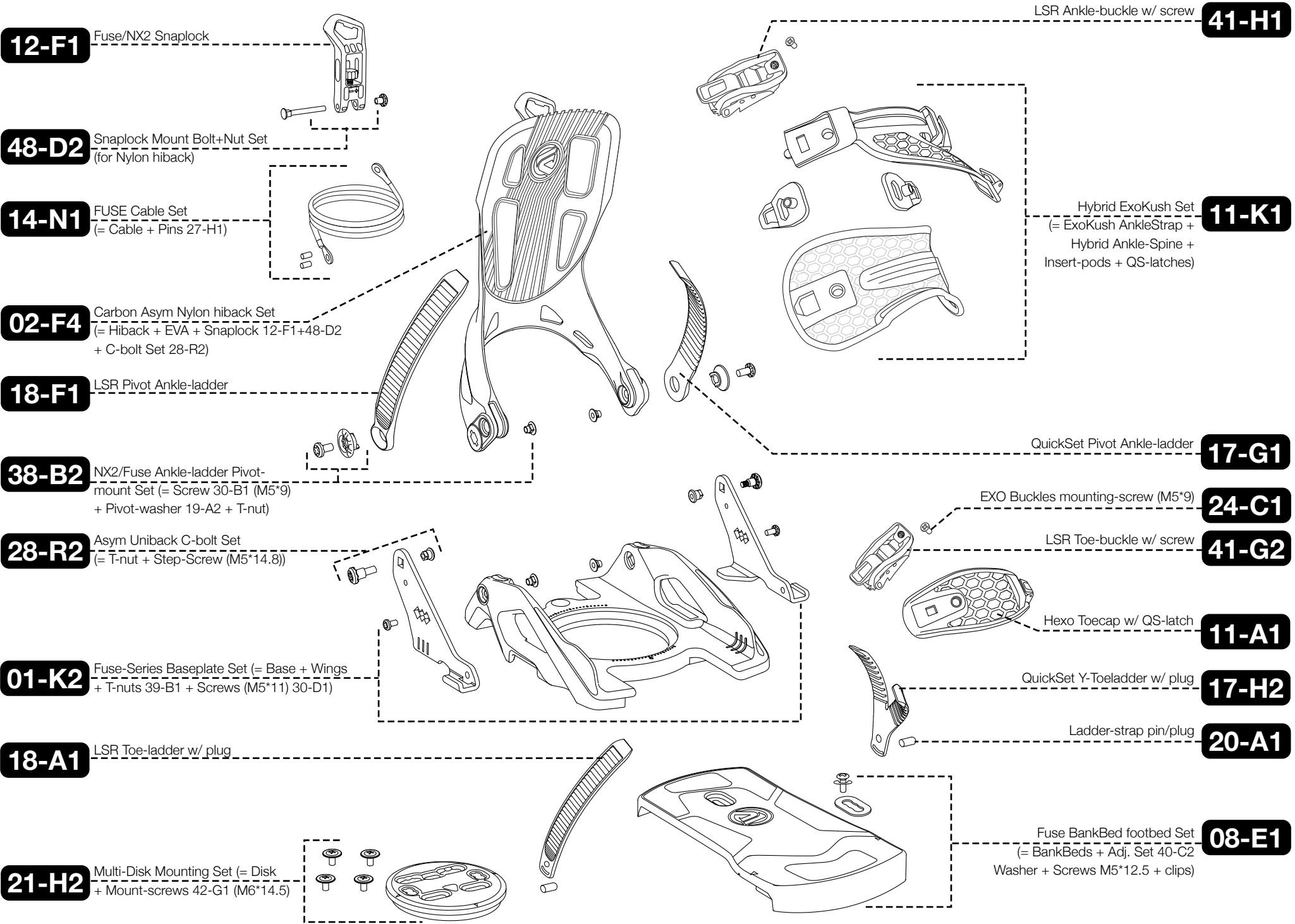
EXO Buckles mounting-screw (M5\*9) **24-C1**

QuickSet Pivot Ankle-ladder **17-G1**

QuickSet Toe-ladder w/ plug **17-D1**

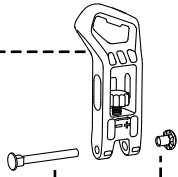
Ladder-strap pin/plug **20-A1**

Fuse BankBed footbed Set **08-E1**  
(= BankBeds + Adj. Set 40-C2 Washer + Screws M5\*12.5 + clips)

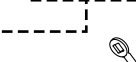




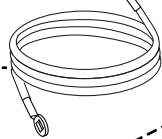
**12-F1** Fuse/NX2 Snaplock



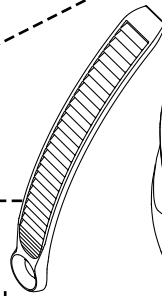
**48-D2** Snaplock Mount Bolt+Nut Set  
(for Nylon hiback)



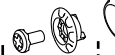
**14-O1** NX2-CX Cable



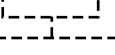
**02-F3** Asym hiback Set  
(= Hiback + EVA + Snaplock 12-F1+48-D2  
+ C-bolt Set 28-R2)



**18-F1** LSR Pivot Ankle-ladder



**38-B2** NX2/Fuse Ankle-ladder Pivot-mount Set (= Screw 30-B1 (M5\*9)  
+ Pivot-washer 19-A2 + T-nut)



**28-R2** Asym Uniback C-bolt Set  
(= T-nut + Step-Screw (M5\*14.8))



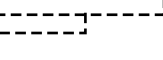
**27-G2** NX2-Cable Mount-Set  
(= Cover + Washers + Tnut + Screw 30-B1 (M5\*9))



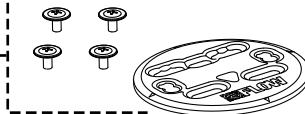
**18-B1** LSR Toe-ladder



**34-C2** NX2 Toeladder Mount-Set  
(= Cover + T-nut + Screw 30-B1 (M5\*9))

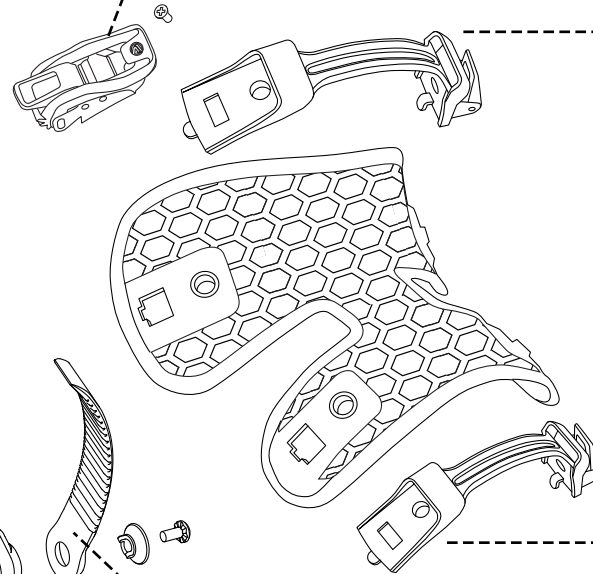


**21-G3** Multi-Disk Alu Mounting Set (= Disk  
+ Mount-screws 42F2 (M6\*13))



LSR Ankle-buckle w/ screw

**41-H1**



Fusion ExoFrame Set  
(= ExoFrame + AnkleSpine  
+ ToeSpine + QS-latches)

**11-F1**

LSR Toe-buckle w/ screw

**41-G2**

EXO Buckles mounting-screw (M5\*9)

**24-C1**

QuickSet Pivot Ankle-ladder

**17-G1**

QuickSet Toe-ladder

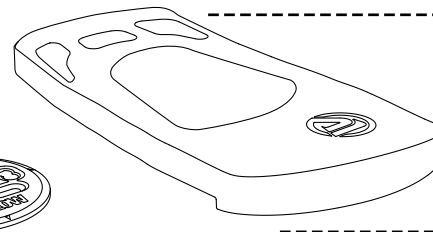
**17-E1**

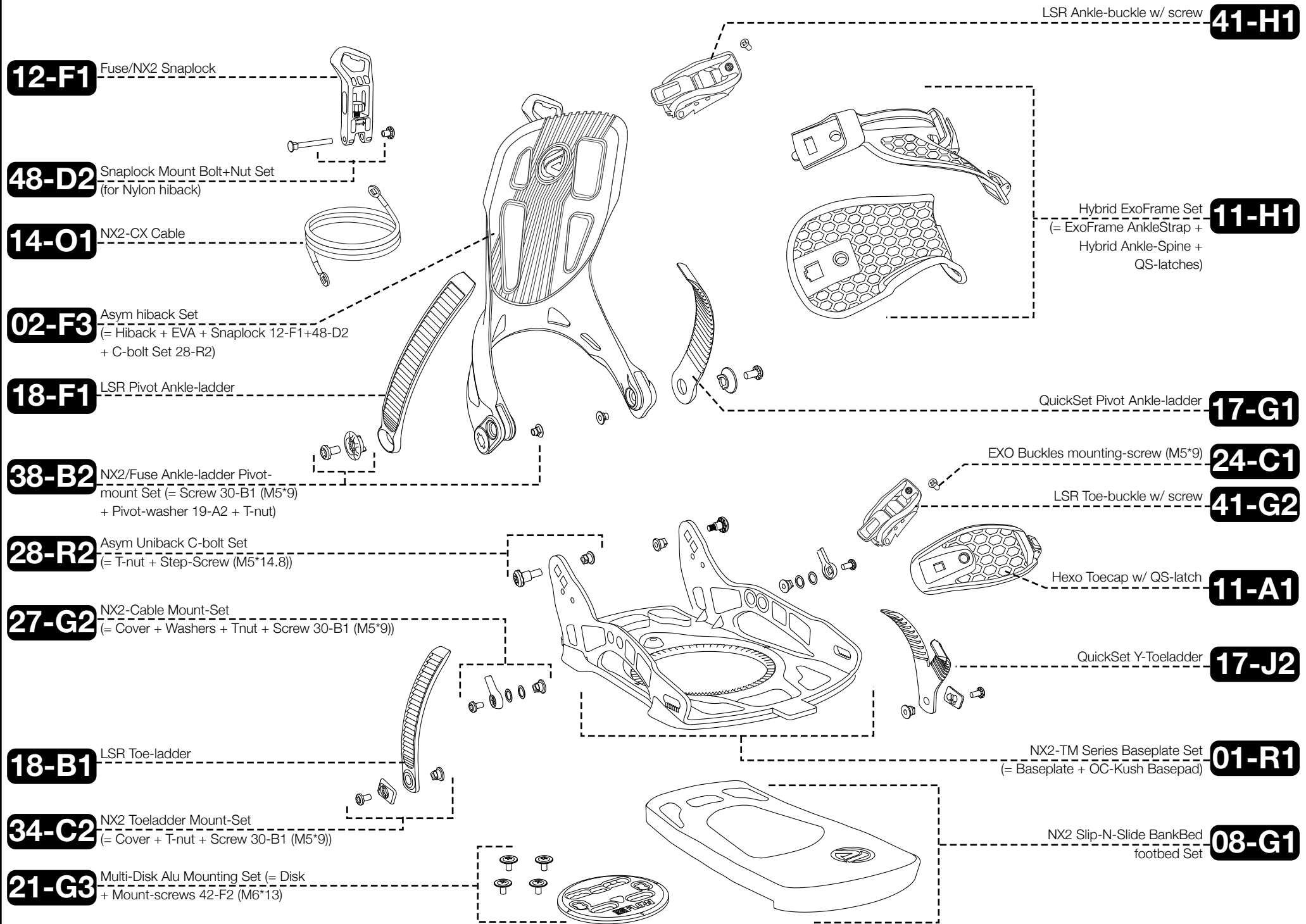
NX2-TM Series Baseplate Set  
(= Baseplate + OC-Kush Basepad)

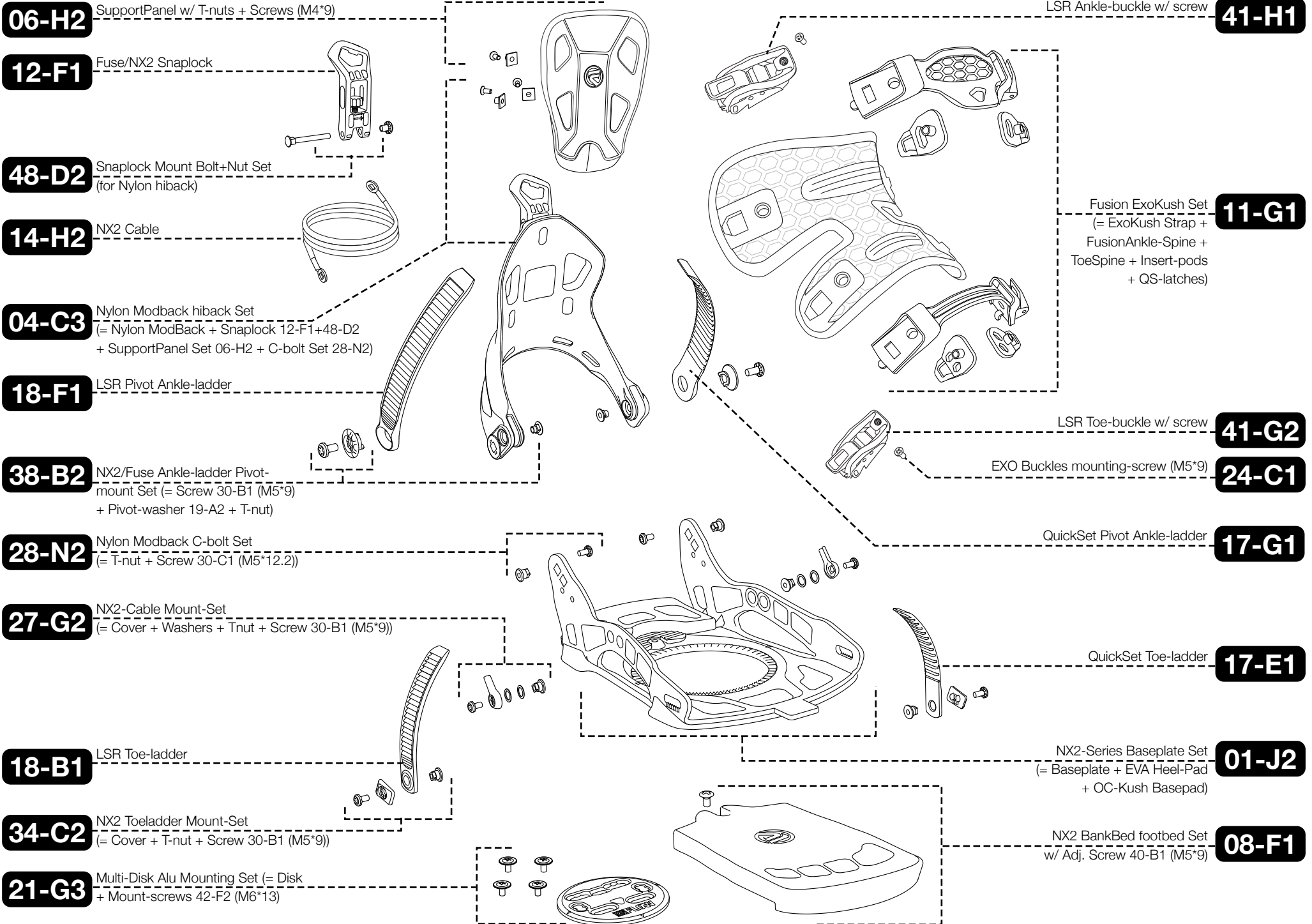
**01-R1**

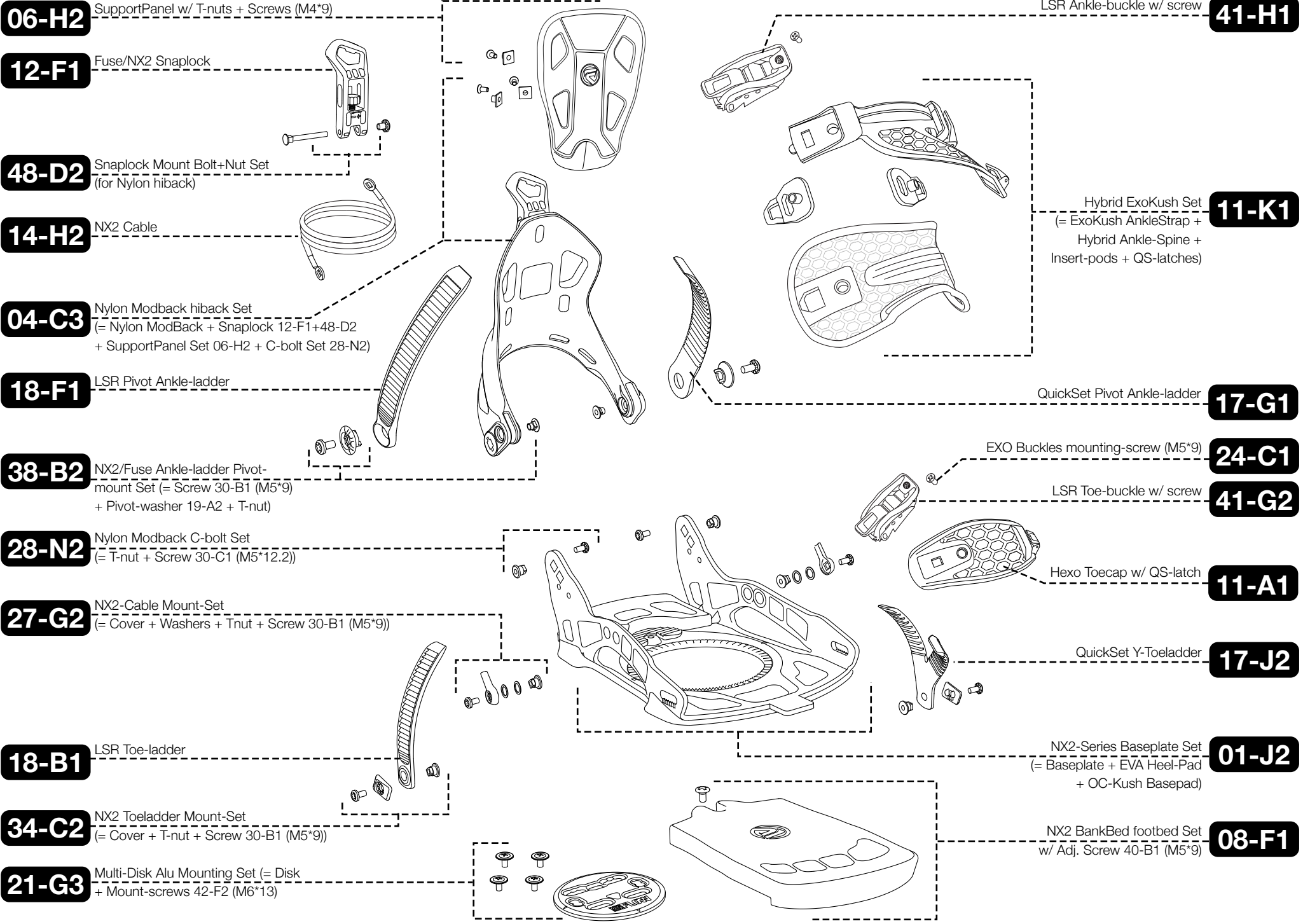
NX2 Slip-N-Slide BankBed  
footbed Set

**08-G1**

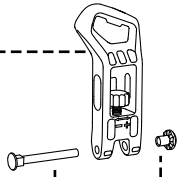




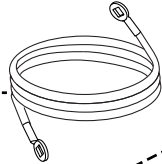




**12-F1** Fuse/NX2 Snaplock



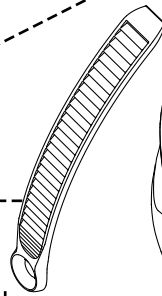
**48-D2** Snaplock Mount Bolt+Nut Set  
(for Nylon hiback)



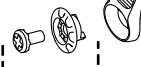
**14-O1** NX2-CX Cable



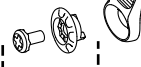
**02-F4** Carbon Asym hiback Set  
(= Hiback + EVA + Snaplock 12-F1+48-D2  
+ C-bolt Set 28-R2)



**18-F1** LSR Pivot Ankle-ladder



**38-B2** NX2/Fuse Ankle-ladder Pivot-mount Set  
(= Screw 30-B1 (M5\*9)  
+ Pivot-washer 19-A2 + T-nut)



**28-R2** Asym Uniback C-bolt Set  
(= T-nut + Step-Screw (M5\*14.8))



**27-G2** NX2-Cable Mount-Set  
(= Cover + Washers + Tnut + Screw 30-B1 (M5\*9))



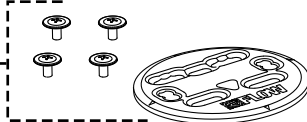
**18-B1** LSR Toe-ladder



**34-C2** NX2 Toeladder Mount-Set  
(= Cover + T-nut + Screw 30-B1 (M5\*9))

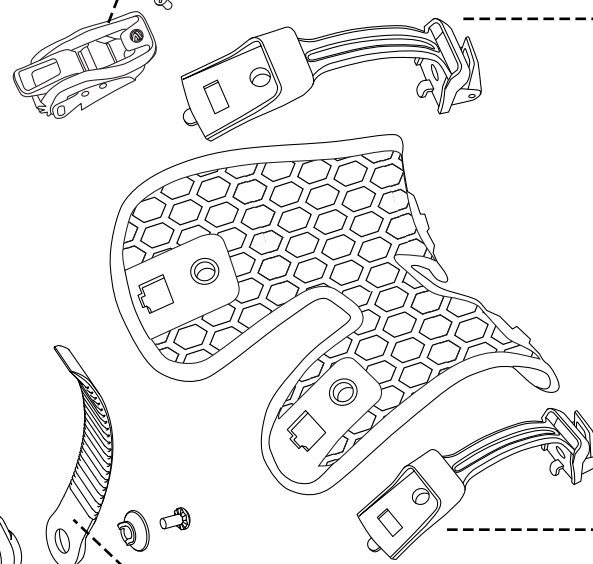


**21-G3** Multi-Disk Alu Mounting Set (= Disk  
+ Mount-screws 42-F2 (M6\*13))



LSR Ankle-buckle w/ screw

**41-H1**



Fusion ExoFrame Set  
(= ExoFrame + AnkleSpine  
+ ToeSpine + QS-latches)

**11-F1**

LSR Toe-buckle w/ screw

**41-G2**

EXO Buckles mounting-screw (M5\*9)

**24-C1**

QuickSet Pivot Ankle-ladder

**17-G1**

QuickSet Toe-ladder

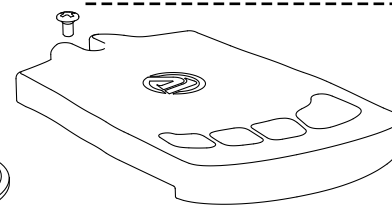
**17-E1**

NX2-Series Baseplate Set  
(= Baseplate + EVA Heel-Pad  
+ OC-Kush Basepad)

**01-J2**

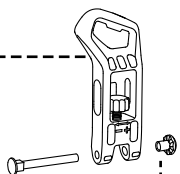
NX2 BankBed footbed Set  
w/ Adj. Screw 40-B1 (M5\*9)

**08-F1**

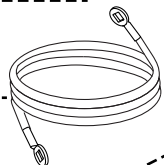




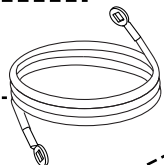
**12-F1** Fuse/NX2 Snaplock



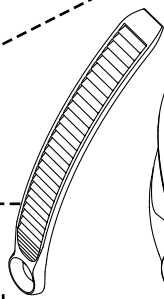
**48-D2** Snaplock Mount Bolt+Nut Set  
(for Nylon hiback)



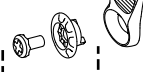
**14-O1** NX2-CX Cable



**02-F4** Carbon Asym hiback Set  
(= Hiback + EVA + Snaplock 12-F1+48-D2  
+ C-bolt Set 28-R2)



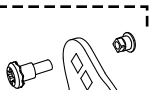
**18-F1** LSR Pivot Ankle-ladder



**38-B2** NX2/Fuse Ankle-ladder Pivot-mount Set  
(= Screw 30-B1 (M5\*9)  
+ Pivot-washer 19-A2 + T-nut)



**28-R2** Asym Uniback C-bolt Set  
(= T-nut + Step-Screw (M5\*14.8))



**27-G2** NX2-Cable Mount-Set  
(= Cover + Washers + Tnut + Screw 30-B1 (M5\*9))



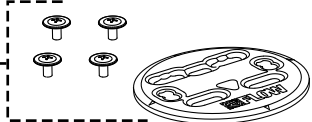
**18-B1** LSR Toe-ladder



**34-C2** NX2 Toeladder Mount-Set  
(= Cover + T-nut + Screw 30-B1 (M5\*9))

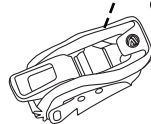


**21-G3** Multi-Disk Alu Mounting Set (= Disk  
+ Mount-screws 42-F2 (M6\*13))



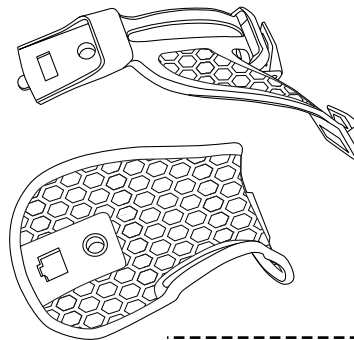
LSR Ankle-buckle w/ screw

**41-H1**



Hybrid ExoFrame Set  
(= ExoFrame AnkleStrap +  
Hybrid Ankle-Spine +  
QS-latches)

**11-H1**



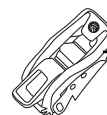
QuickSet Pivot Ankle-ladder

**17-G1**



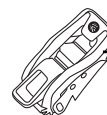
EXO Buckles mounting-screw (M5\*9)

**24-C1**



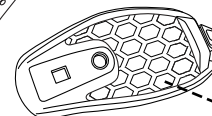
LSR Toe-buckle w/ screw

**41-G2**



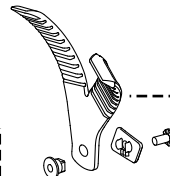
Hexo Toecap w/ QS-latch

**11-A1**



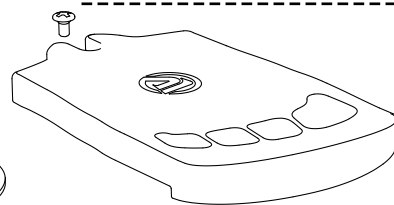
QuickSet Y-Toeladder

**17-J2**



NX2-Series Baseplate Set  
(= Baseplate + EVA Heel-Pad  
+ OC-Kush Basepad)

**01-J2**



NX2 BankBed footbed Set  
w/ Adj. Screw 40-B1 (M5\*9)

**08-F1**

